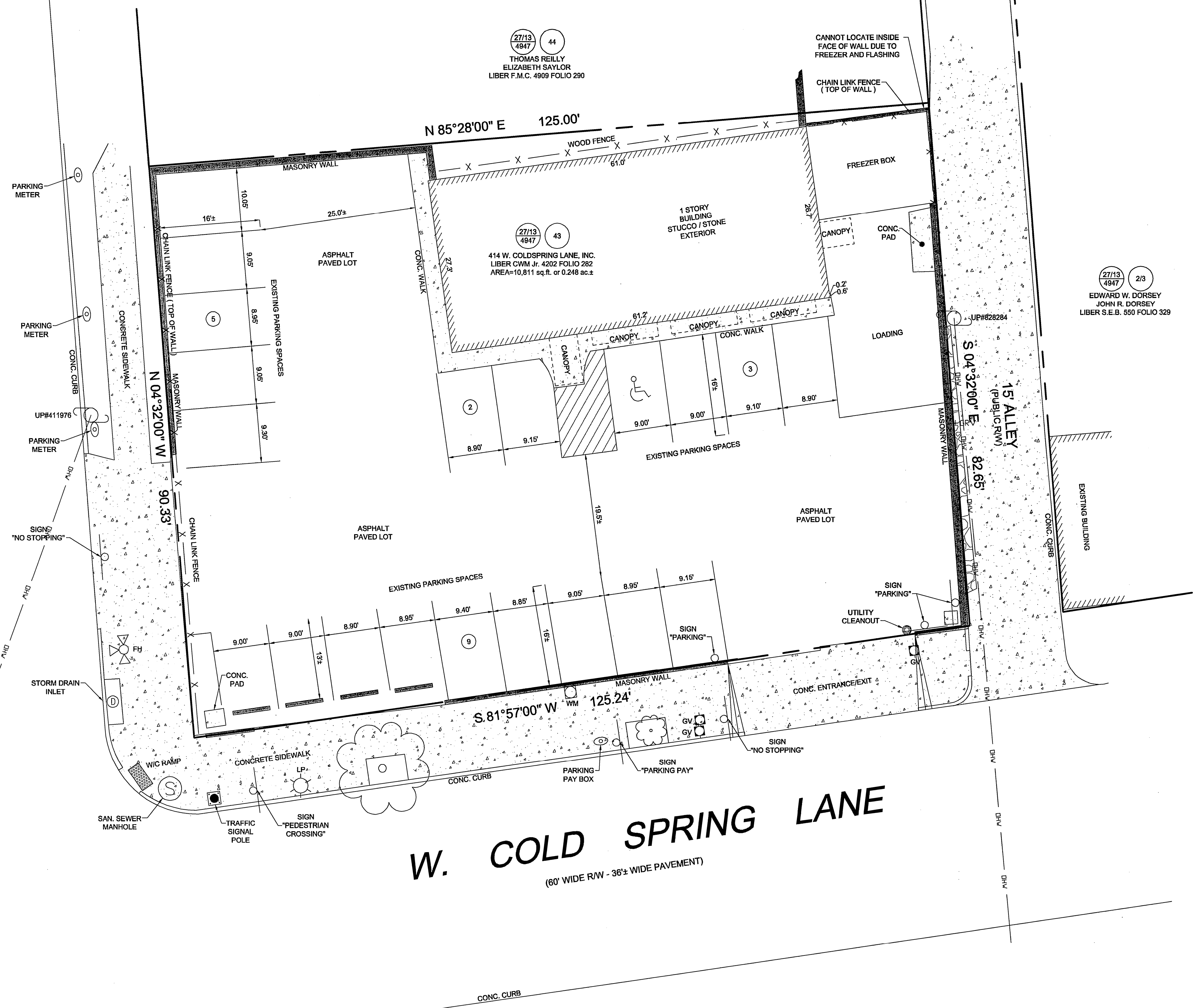


SCHENLEY ROAD
(60' WIDE R/W - PAVEMENT WIDTH VARIES)



W. COLD SPRING LANE
(60' WIDE R/W - 36± WIDE PAVEMENT)

Control Note:
Bearings and Coordinates shown hereon are based on the Baltimore City Survey Control System as referenced from Traverse Control Stations:

Station	Northing	Easting	Elevation
Balt. City - 34205	17,124.238	-4,689.019	
Balt. City - 34206	AZ-82°02'24"	H. DIST 401.430'	

LOCATION OF IMPROVEMENTS SURVEY

S'GHETTI EDDIE'S
WARD 27 - SECTION 13 - BLOCK 4947 - LOT 43
BALTIMORE, MARYLAND
A/K/A 414 W. COLD SPRING LANE
(& 4501 SCHENLEY ROAD)
BALTIMORE, MD 21210

GRAPHIC SCALE
10 0 5 10 20 40
(IN FEET)
1 inch = 10ft.

Colbert Matz Rosenfelt, Inc.
Engineers * Surveyors * Planners
2835 Smith Avenue, Suite G
Baltimore, Maryland 21209
Telephone: (410) 653-3838
Facsimile: (410) 653-7953

NO.	DATE	REVISIONS:	BY	SCALE: 1" = 10'
				DATE: NOVEMBER 17, 2011
				JOB NO.: 2011-180.1
				DESIGNED:
				DRAWN: TRB
				CHECKED: MAR
				FILE: 2011180.1 ENG BT 11_17_11
				DRAWING NUMBER:
				SHEET 1 OF 1